



VAN ISLE WATER

The Water System Experts

Since 1972

CELEBRATING

50

YEARS

1972-2022

2022


WASTEWATER

VANISLEWATER.COM

Terms And Conditions

Terms of Payment: All product shipped from VAN ISLE WATER will be C.O.D. unless prior credit approval is obtained. C.O.D. shipments will be VISA, MC, or Certified Cheque prior to shipping. Qualified accounts have net 30 days from time of order.

Prices & Taxes: Catalogue is "List" pricing in Canadian dollars. "List" pricing is only suggested retail pricing and not actual. Actual retail pricing varies by product and region. All prices are as of date of printing and are subject to change without notice. Van Isle Water is not responsible for printing errors. Buyer shall pay all applicable taxes.

Freight Policy: Freight is prepaid on \$1000 net pre tax value for net 30 account customers. Items requiring special handling such as dangerous goods and oversize products are designated by a "  " symbol and are exclusive of prepaid freight. Van Isle Water will use the carrier of its choice.

Freight Claims: Van Isle Water does not assume responsibility for freight damage. All freight damage and shipping discrepancies must be claimed within 48 hours of receipt of goods. Customer must inspect shipments for damage and make claim with carrier.

Short Shipment: Van Isle Water must be notified of any short shipments within 48 hours of receipt of goods with copy of carrier waybill and customer count.

Return Goods: Return goods must be authorized by Van Isle Water. A copy of original invoice must accompany all returns. All returns must be shipped prepaid freight and are subject to a restocking fee up to 25%. Product damaged in freight return will not be accepted. Credit will be issued to account for future purchases. No returns after 30 days. Special order items are not returnable.

Warranty: All defective items within the manufactures warranty period must be authorized first and returned to Van Isle Water with a RGA#. Customer is responsible for return of item(s) and all freight costs. Item(s) will either be replaced or repaired at Van Isle Water's discretion. Item(s) sent back must be accompanied with customer proof of purchase and retail customer receipt. Shipment of replaced or repaired item will be responsibility of customer. Replacement or repaired items may be added to a prepaid shipping order.

Contact

Victoria, BC

461 Dupplin Rd,
Victoria, BC V8Z 1B8
Phone: 250-383-7145
Toll-Free: 1-888-444-8497
Fax: 250-385-1216
sales@vanislewater.com

Head Office

Hours of Operation:
Mon to Fri 7:30 am - 5:00 pm
Sat: 8:00 am - noon
Sun: Closed

Administration:

admin@vanislewater.com

Sales:

sales@vanislewater.com

Website Support:

websupport@vanislewater.com

Courtenay, BC

260B Tsolum Rd,
Courtenay, BC V9N 3R2
Phone: 250-338-8737
Toll-Free: 1-800-665-8311
Fax: 250-338-7933
courtenay@vanislewater.com

Hours of Operation:
Mon to Fri 8:00 am - 5:00 pm
Sat: Closed
Sun: Closed

Shipping/Receiving:

shipping@vanislewater.com

Surrey, BC

800-10281 Grace Rd,
Surrey, BC V3V 3V7
Phone: 778-357-0257
surrey@vanislewater.com

Mon to Fri 8:00 am - 4:30 pm
Saturday: Closed
Sunday: Closed

SUMP PUMPS

BIG JOHN

Typical applications include commercial, industrial, and home uses where liquid must be transferred or recirculated.

- Designed for continuous duty.



	HP	Cord	Disch.			Item #	List
6CIA	Automatic	1/3	10'	1 1/2"		LG-506158	
6CIM-R	Manual	1/3	10'	1 1/2"		LG-506271	

Flow in US GPM @ Total Head in Feet					SO	FLA
6CIA/M	5'	10'	15'	18'		
	46	29	13		18'	9

MULTI-PURPOSE TRANSFER PUMP

Ideal for draining hot water tanks, appliances, and aquariums as well as water transfer applications where easy portability is required.



- Portable non-submersible transfer pump.
- Choice of 115 Volt or 12 Volt DC models.
- Stainless steel construction.
- Dual thread intake and discharge with both 3/4" male garden hose thread and 3/8" FNPT for pipe connection.
- Includes replacement impeller kit.
- MPFVK115 includes hoses and suction attachment.

Model	Amps	Volts	Connection	Item #	List
MPFVK115	1.6	115	3/4" GHT	RL-14942015	
MPFV12	7	12v DC	3/4" GHT	RL-14942004	

LITTLE GIANT 5 MSP

- Removable screen for easy cleaning with screen removed will pump down to 1/8".
- 1" FIPT (c/w adapter to garden hose).
- **New Oil-less Motor**



HP	Voltage	Cord	Item #	List
1/6	115	10 ft	LG-505273	

Flow in US GPM @ Total Head in Feet						SO	FLA
Model	1'	5'	10'	15'	20'		
5 MSP	20	19	16	13	8	26.0'	2.0

DIAPHRAGM SWITCH

Diaphragm switches are ideal for use in tight spaces where "tether-style" switches are too large.



- Maximum load - 10 amps.
- Designed for use with 5-MSP.
- RS 5 on level range is 6" - 9", off level is 1" - 4".
- RS 5LL on level range is 2" - 3", off level is 1/2"-1 1/2".

	Max Hp	Cord	Item #	List
RS 5	1/2 HP	10 ft	LG-599008	
RS 5 LL	1/3 HP	18 ft	LG-599014	

SUMP PUMP ACCESSORIES

Hose	Item #	List
24' x 1 1/4" Hose	PA-SPHK	
Check Valves		
1 1/4" MIPT X 1 1/4" Hose	VA-SPHCV12	
1 1/2" MIPT X 1 1/4" Hose	VA-SPHCV15	





CHECK OUR WEB SITE

- Up To Date Pricing
- Technical Information

vanislewater.com

RED LION 12 VDC BATTERY BACK-UP SYSTEM



Provides emergency protection from water damage due to primary sump pump failure or power outages in residential areas such as basements and crawl spaces.



- Automatic sump pump back-up system.
- 12 Volt DC/980 mA battery charger with alarm.
- Includes charger, pump, 1.5" street elbow, 1.5" check valve, 1.5" coupling, battery box, 12 V DC pump control switch.

	Cord	Item #	List
RL-SPBS	6'	RL-14942792	

Flow in US GPM @ Total Head in Feet						SO	FLA
	0'	5'	10'	15'	18'		
RL-SPBS	41	30	20	8	18'	14	

PRESSURE FIELD ORIFICE DISCHARGE RATE DESIGN AID

The values in the columns give the flow rate in gpm for various residual pressures and orifice diameters.

Plume	ORIFICE DISCHARGE RATES (gpm)								
	Orifice Diameter (in.)								
Head (ft)	3/32	1/8	5/32	3/16	7/32	1/4	9/32	5/16	11/32
2	0.15	0.26	0.41	0.59	0.80	1.04	1.32	1.63	1.97
3	0.18	0.32	0.50	0.72	0.98	1.28	1.62	1.99	2.41
4	0.21	0.37	0.58	0.83	1.13	1.47	1.87	2.30	2.79

EFFLUENT PUMPS

LITTLE GIANT

- Heavy-duty cast iron construction with a plastic base.
- Designed for continuous duty w/ energy-saving low amp draw.
- 1 1/2" FIPT discharge; 20' cord.
- Float Switch NOT included.



	Solids	HP	Voltage	Item #	List	Flow in US GPM @ Total Head							SO	FLA
						5'	10'	15'	20'	30'	40'	50'		
6EC-CIM	1/2"	1/3	115v	LG-506802		53	50	42	34	-	-	-	28'	5.0
10EC-CIM	1/2"	1/2	115v	LG-510800		67	57	52	47	28	-	-	36'	6.5
12E-CIM	3/4"	1/2	115v	LG-512001		50	48	46	44	34	23	8	53'	10

LITTLE GIANT

Designed for effluent wastewater removal, dewatering and water transfer.

- Cast iron construction and impeller.
- Designed for high torque
- 2" FIPT discharge and a 20' cord.
- Float Switch NOT included.



Model	Solids	HP	Voltage	Item #	List	Flow in US GPM @ Total Head							FLA	
						5'	10'	15'	20'	25'	SO	115v	230v	
WS50M-20	3/4"	1/2	115	LG-620231		WS50	105	92	80	64	50	42'	11.6	9.7
WS50M-12-20	3/4"	1/2	230	LG-620251										

Model	Solids	HP	Voltage	Item #	List	Flow in US GPM @ Total Head in Feet								SO	FLA	
						20'	30'	40'	50'	60'	70'	80'	115v		230v	
*WS50HM-20	3/4"	1/2	115	LG-620218		WS50H	98	78	57	30	-	-	-	63'	15	9.7
WS50HM-12-20	3/4"	1/2	230	LG-620220												
WS100HM-12-20	3/4"	1	230	LG-620222		WS100H	140	128	115	97	79	55	27	90'	-	13.6
WS100HM-32	3/4"	1	208/3ph	LG-620207												

*Best practice requires 20 amp breaker, 12 guage wiring, use w/ amp master switch (SJE-20AMDWOP).

LITTLE GIANT

Designed for effluent wastewater removal, dewatering and water transfer.

- Epoxy-coated cast iron construction.
- 16EH has a non-clog cast iron impeller.
- 20E has a vortex brass impeller.
- Designed for continuous duty.
- 1 1/2" FIPT discharge; 20' cord.
- Float Switch NOT included.



Model	Solids	HP	Voltage	Item #	List	Flow in US GPM @ Total Head in Feet										SO	FLA
						20'	30'	40'	50'	60'	70'	80'	90'	100'			
14EH-CIM	3/4"	1/2	115	LG-514220		14EH	60	40	20	-	-	-	-	-	-	50'	12.5
16EH-CIM	3/4"	1	230/1	LG-514520		16EH	-	90	70	45	30	-	-	-	-	81'	10.2
20E-CIM	3/4"	2	230/1	LG-520200		20E	135	125	110	98	89	75	62	40	20	110'	16.4

FRANKLIN C1 SERIES PUMPS

Designed for use in grey water / filtered effluent and rain water collection tanks. The C1 Series cistern pump provides high performance and long life in less than ideal water conditions. The C1 Series pump is able to pass solids up to 1/8". The pump's unique bottom suction design allows for maximum fluid draw down without the use of a flow induction sleeve.

Model #	Voltage	Item #	List	Model #	Voltage	Item #	List
10	115	FPS-90301005		10	230	FPS-90301010	
20		FPS-90302005		20		FPS-90302010	
20X		FPS-90302015		20X		FPS-90302020	
30		FPS-90303005		30		FPS-90303010	



SERIES	PSI	30	40	50	60	MAX PSI	Amps
10	GPM	14	13	11	9	97	5
20	GPM	24	18	11	-	60	5
20x	GPM	25	21	12	5	73	5
30	GPM	26	6	x	x	40	5

ShinMaywa

Item #	Flow in US GPM @ Total Head in Feet								SO	FLA
	5'	10'	15'	20'	25'	30'	35'	40'		
SHI-02S	45	30	15	-	-	-	-	-	19'	2.9
SHI-03S	66	50	35	22	13	-	-	-	28'	4.2
SHI-05S	87	71	58	42	30	18	-	-	36'	5.3
SHI-10S	112	100	88	80	68	53	38	25	48'	9.6

- 2" Discharge.
- Anti-wicking cable entry.
- Dual Shaft Seals.
- 115V
- Designed & built in Japan.
- 2 Year Warranty.

Model	Solids	HP	Cord	Item #	List
50CR2.15S	1 1/4"	1/5	20'	SHI-02S	
50CR2.25S	1 1/4"	1/3	33'	SHI-03S	
50CR2.4S	1 1/4"	1/2	33'	SHI-05S	
50CR2.75S	1 1/4"	1	33'	SHI-10S	



SEWAGE PUMPS

LITTLE GIANT

- Cast iron construction and vortex nylon impeller.
- Designed for continuous duty, with energy-saving low amp draw.
- Handles up to 2" solids w/ 2" FIPT discharge and a 20' power cord.

Model	Solids	HP	Voltage	Item #	List
9SC-CIM	2"	4/10	115	LG-509413	
10SC-CIM	2"	1/2	115	LG-511432	

Flow in US GPM @ Total Head in Feet					
	5'	10'	15'	SO	FLA
9SC	110	70	30	20'	8.5
10SC	120	100	80	25'	11



LITTLE GIANT

- Cast iron construction w/ 2 vane non-clog cast iron impeller.
- Designed for continuous duty.
- Handles up to 2" solids
- 3" FIPT discharge.
- Float Switch NOT included.

Model	Solids	HP	Voltage	Cord	Item #	List
14S-CIM	2"	1/2	115	20'	LG-514320	
16S-CIM	2"	1	230	20'	LG-514620	
16S-CIM	2"	1	208/3ph	20'	LG-514750	
18S-CIM	2"	1.5	230/1	20'	LG-520301	
20S-CIM	2"	2	230/1	20'	LG-520100	

Flow in US GPM @ Total Head in Feet										FLA	FLA	FLA
	10'	15'	20'	30'	40'	50'	60'	70'	SO	115	230	3PH
14S	100	70	35	40	-	-	-	-	25'	11.6		
16S	160	128	100	40	-	-	-	-	35'			6.8
18S	160	148	137	111	84	50	15	-	64'		16.0	
20S	205	195	168	140	120	85	55	20	77'		18.0	



LITTLE GIANT

- Commercial dewatering sump applications with up to 2" solids.
- Float Switch NOT included.
- Designed for continuous duty.
- 2" FIPT discharge and a 30' cord.
- Cast iron construction w/ non-clog cast iron impeller.

Model	Solids	HP	Voltage	Cord	Item #	List
WS52HM	2"	1/2	115	30'	LG-620254	
WS52HM-12	2"	1/2	230	30'	LG-620256	
WS102HM-12	2"	1	230	30'	LG-620258	

Flow in US GPM @ Total Head in Feet									FLA		
	10'	15'	20'	25'	30'	35'	SO	115	230	3PH	
WS52H	128	97	68	32	-	-	29'	15	7.5		
WS102H	190	170	148	124	100	74	48'	-	13.6		



Little GIANT®

SIMPLEX AND DUPLEX SYSTEMS



Applications:

Collection of sewage, effluent, drainage or seepage water.

- Basins available in high density polyethylene structural foam [18" (46 cm), 24" (61 cm), & 30" (76 cm) dia.] or fiberglass [36" (9.14 cm) dia].
- Complete with necessary sealing hardware and flanges.
- Available with 2" or 3" (51 mm or 76 mm) vent or discharge flange.
- 4" inlet hub is included with the basin.
- Water-tight and gas-tight when properly installed.
- Durable steel gasketed cover standard on simplex and duplex basins .
- One-piece, seam-free construction on basin.
- Duplex covers include two access plates.
- Ready-to-install for simple and economical installation .
- Temperature rated up to 130 °F (54.4 °C).



**FOR MORE INFORMATION, CONTACT
A VAN ISLE WATER SALES ASSOCIATE**

NEW FOR 2022

16G SERIES - 1 HP

The 16G Series is designed as a new or replacement grinder pump for the toughest residential and light commercial wastewater applications. Ideal for use as a drop-in replacement for any effluent or sewage pump struggling with clogs and binding.

Features:

- Heavy-duty 1 hp Class F motor provides optimal power to prevent flushables and other debris from causing clogs and downtime.
- Superior grinding capability with proven results based on the patented cutting mechanism renowned in Franklin Electric's 2 hp grinder pump.
- Silicon carbide mechanical seal provides up to six times longer seal life with lower thermal expansion and higher abrasion resistance when compared to carbon ceramic seals.
- Easily replaceable, 20' power cord is sealed at the connection point for unit protection against water.
- Non-skid adjustable legs for stability.



Pit Plus

GPM @ Height in Feet					SO	PSI
10'	20'	30'	40'	50'		
49.3	43.9	37.5	28.7	15.3	53	22.9

Model	HP	V	Hz	Ph	FLA	Switch Type	Disc.	Item #	List
16G-M151-20	1	120	60	1	12.5	Manual	1-1/4" or 2"	LG-509809	
16G-M231-20	1	230	60	1	6.5	Manual	1-1/4" or 2"	LG-509812	
Pit Plus 16JF2V2D	1	120	60	1	12.5	Float	1-1/4" or 2"	LG-509815	

GA-A SEWAGE GRINDER PUMP

2HP, 208/230V, sPH, 20ft Cord, 1 1/4" FIPT Discharge, Brass Impeller. Included: Float Switch, Leg Kit, Non-overloading Impeller (does not need trimming).

Item #	List
GP-A231-20 c/w SJE Switch	LG-515861

IGP-A	Flow in US GPM @ Total Head in Feet						SO	FLA
	20'	40'	60'	80'	100'	120'		
	32	31	30	25	20	10	130'	13.9



"E1" GRINDER RETROFIT KIT

Low pressure sewage, direct simplex replacement grinder for positive displacement grinder systems.

- 2 HP 3450 rpm, high starting torque, automatic grinder pump with mechanical float switch.
- Patented cutting system providing tight cutting clearances for superior cutting action grinding 414,000 cuts per minute.
- 1-1/4" cast iron anti-siphon/check valve.
- 1-1/4" NPT piping.
- Adjustable alarm float switch preset at factory.

Item #	List
Grinder Retrofit Kit	LG-515835
*Adapter harness	LG-115156
*Square female round male plug adapter	



Volts	Hz	Amps		GPM @ Height in Feet					SO
		FLA	Start	40'	60'	80'	100'	120'	
208-230	60	13.9	65	31	30	25	20	10	130

Model	Switch Type / Operation	On Level	Off Level	Cord	Weight
GP-A-RFKT	Piggyback Mechanical Float	23" - 25"	9" - 11"	20'	135 lbs

LittleGIANT

PIT-PLUS PREMIUM SIMPLEX SYSTEM (24"X24")

For collection and transfer of sewage, effluent, drainage and seepage water. Includes Basin, 9SN Pump, Float Switch.

- Roto-molded polyethylene basin: 24" x 24".
- Radial rib design for extra strength, molded inlet hub easy access.
- Molded anti-torque stops at basin bottom to secure pump.



3 Year Wty

Solids	HP	Voltage	Cord	Disch.	Vent	Item #	List
2"	4/10	115	20'	2"	3"	LG-509679	

Flow in US GPM @ Total Head in Feet Pump	Total Head in Feet			SO	FLA
	5'	10'	15'		
9SN	110	70	30	20'	8.5

WRS PUMP & TANK KIT

A convenient sized tank and pump combo, is ideal for impractical gravity drainage areas such as under sinks and laundry trays.

- Pre-assembled for easy installation.
- Includes two 1 1/2" MNPT x 2" slip adapters for inlet and discharge.
- Includes one 2" MNPT x 1 1/2" slip adapter for vent.



3 Year Wty

Model	HP	Voltage	Cord	Tank Size	Item #	List
WRS-6	1/3	115	10'	5 gal	LG-506055	
WRSC-6	1/3	115	10'	3.5 gal	LG-506065	

Flow in US GPM @ Total Head in Feet Pump	Total Head in Feet			SO	FLA
	5'	10'	15'		
WRS-6	46	29	13	18.0'	9.0
WRSC-6	46	29	13	18.0'	9.0

FBSTF LESS POWER

Self priming centrifugal pumps can be either belt driven or direct driven. This allows the option of connecting these pumps to the motor or engine of your choice.



Model	HP	Item #	List
FBSTF-2	2	2 x 2	FPS-90253002
FBSTF-3	3	2 x 2	FPS-90253003
FBSTF-5	5	3 x 3	FPS-90253004

FBSTF	Flow in US GPM Transm. Pumps based on 3450 RPM								
	20'	25'	30'	35'	40'	50'	60'	70'	80'
2	127	124	118	112	100	78	52	23	-
3	152	152	150	147	142	125	100	43	-
5	267	254	240	224	205	165	110	70	35

LittleGIANT

PIT-PLUS PREMIUM SIMPLEX SYSTEM (20"X 30")

For collection and transfer of sewage, effluent, drainage and seepage water. Includes Basin, 9SN Pump & Float Switch.

- Roto-molded polyethylene basin: 20" x 30".
- Radial rib design for extra strength, molded inlet hub easy access.
- Molded anti-torque stops at basin bottom to secure pump.



3 Year Wty

Solids	HP	Voltage	Cord	Disch.	Vent	Item #	List
2"	4/10	115	20'	2"	2"	LG-509661	

Flow in US GPM @ Total Head in Feet Pump	Total Head in Feet			SO	FLA
	5'	10'	15'		
9SN	110	70	30	20'	8.5

BE-S PUMPS

BE-S series pumps are self priming utility pumps constructed of durable cast iron making them long lasting in a variety of applications.



Model	HP	Voltage	Item #	List
BE-S75	3/4	115/230	1 1/4 x 1 1/4	LG-621825

Model	Flow in US GPM			
	20'	30'	40'	50'
BES75	58	44	29	10

FBSE LESS POWER

Self priming utility/effluent pumps. They are constructed of durable cast iron which makes them long lasting in a variety of applications.

Requires 56J Motor - Single or 3 Phase



FBSE-100-K	1 HP	1 1/4 x 1 1/4	FPS-92925010
FBSE-150-K	1 1/2 HP	2 x 2	FPS-92925015
FBSE-200-K	2 HP	2 x 2	FPS-92925020
FBSE-300-K	3 HP	2 x 2	FPS-92925030

	Flow in US GPM							
	20'	30'	40'	50'	60'	70'	80'	90'
FBSE100K	80	70	60	42	20	-	-	-
FBSE150K	102	78	55	35	8	-	-	-
FBSE200K	126	103	80	58	32	10	-	-
FBSE300K	148	142	130	120	99	70	35	5

NSPHE LESS POWER

Designed for both high pressure and high capacity, these pumps cover a wide range of applications and are ideal for lawn or turf sprinkling and can also be used as a standby pump for fire protection.



NSPHE-300LP	3 HP	2 x 2	FPS-92980033
NSPHE-500LP	5 HP	2 x 2	FPS-92980053

FPS V4 POWERSEWER

FPS grinder low pressure sewer package designed for residential and commercial applications. The enhanced PowerSewer® System allows for single-person access to every component from the top of the basin.

- **Control Panel** - NEMA 4X enclosure with pump and alarm power circuit breakers, manual pump run, and audible/visual alarms.
- **Anti-Shear Discharge** - Integrally-molded protective boss protects the discharge service line from the shear forces generated by backfill and tank settlement.
- **Drop Inlet** - Allows for easy up-and-down and side to side pipe adjustments. The drop inlet feeds solids right to the grinding plane.
- **Shallow Dry Well** - Integrally-molded dry well houses the electrical junction box and isolation valve handle. Sealed wet well opening prevents exposure to sewage and odors.
- **Roto-Molded Tank** - The large capacity and robust HPDE polyethylene tank provides reserve storage during power outages. Plus, the one-piece tank does not require the contractor to cut holes in it. All penetrations are made in the factory.
- **Anti-Siphon Check Valve** - Provides both check and anti-siphon capabilities. Eliminates clogged pumps resulting from pumping downhill.
- **Patented Grinder Pump** - Powerful 2 hp motor to handle the demands of grinding sewage. Available configurations in single-phase and 3-phase, multiple voltages, single-stage and dual-stage, and dual seal. Patented tight cutting clearances for superior grinding at 414,000 cuts per minute.
- **Float Tree Assembly** - Spring release for easy removal and maintenance. Factory set 3-float configuration. Pump on, Pump off, and Alarm indications.



Head	Basin Volume	HP	Voltage	Item #	List
Low	157 gal	2	230v	FPS-EV4PS60IGPH231	
High	157 gal	2	230v	FPS-EV4PS60IGPHM231	

NC SERIES

SUBMERSIBLE NON-CLOG PUMPS

- 3" & 4" HORIZONTAL FLANGE
- 1 PHASE & 3 PHASE
- 3 HP - 10 HP
- FLOWS UP TO 610 GPM
- HEADS UP TO 68'

The FPS® NC Series Non-Clog Pumps are available in single- and three-phase power options to provide a rugged, maintenance-friendly wastewater transfer solution with flows up to 610 gpm. Featuring a field adjustable wear plate and factory standard dual silicon carbide mechanical seals, the NC Series also comes fully supported by an industry-leading team of Technical Support and Service professionals.



- Used for a multitude of purposes in commercial and industrial applications such as: sewage, effluent, irrigation, and general dewatering.
- **Simplified On-Site Maintenance:** Field adjustable wear plate provides clearance between the impeller and volute for simplified maintenance, minimizing operational downtime while maximizing profit without the need and additional cost of a replaceable wear ring.
- **Up To 6 Times Longer Seal Life:** Factory standard dual silicon carbide mechanical seals have low thermal expansion and higher abrasion resistance than carbon versus ceramic commonly used for both seals
- **Factory standard exclusion seal provides a first line of defense.** If the exclusion seal and first mechanical seal is breached, the Seal Fail probe will send a signal to the control panel providing an alert for service.
- **Premium Heat & Chemical Resistance:** Motor enclosure sealing system utilizes Fluoroelastomer (FKM) O-Rings to offer added chemical and temperature resistance.
- All castings are powder coated, while ductile iron casted impellers provide added corrosion resistance and are less brittle when handling rigid debris.



3" Base Elbow, NPT Discharge



4" Base Elbow, Flanged Discharge



3" & 4" Base Elbow, Flanged Discharge (Single Rail)



3" Base Elbow, NPT Discharge (Single Rail)



3" Bolt-on Elbow, NPT Discharge



SS PREMIUM SUBMERSIBLE

- Automatic submersible sump pump - ideal for high-volume water removable applications.
- HD stainless steel and cast iron construction.
- Clog-resistant design - capable of passing 3/4" diameter semi-solids.
- Piggyback tethered float switch.
- RL-SS50T - 10' cord.
- RL-SS100T - 20' cord.



Model	Disc.	HP	Voltage	Item #	List
RL-SS50T	1 1/2"	1/2	115	RL-14942781	
RL-SS100T	2"	1	115	RL-14942782	

	Flow in US GPM @ Total Head in Feet					SO	FLA
	5'	10'	15'	20'	30'		
RL-SS50T	50	40	30	16	-	25'	5
RL-SS100T	80	72	62	50	22	35'	8

HEAVY-DUTY SUBMERSIBLE UTILITY PUMP

Construction-grade, heavy-duty submersible pump designed for the most demanding applications such as dewatering construction sites, ponds, and ditches.

- Special urethane rubber impeller.
- High efficiency, 115V permanent split capacitor (PSC) motor, with thermal overload protections as well as upper and lower ball bearings for extended operation.
- Double-seal system (silicon carbide primary mechanical seal with a carbon ceramic secondary seal).
- 20' cord.



Model	Disc.	HP	Voltage	Item #	List
RL50CON	2"	1/2	115	RL-14942722	
FS750	2"	1	115	LG-620241	

	Flow in US GPM @ Total Head in Feet					SO	FLA
	4'	10'	20'	30'	37'		
RL50CON	60	54	40	20	-	37'	5.0
FS750		76	66	54		52'	10.0

CAST IRON INDUSTRIAL SPRINKLER PUMP

Ideal for both large residential properties and commercial lawn sprinkling systems.

- High efficiency impeller and diffuser for high-performance and efficient water flow.
- 2" suction and 2" discharge helps to prevent debris from clogging impellers and maintain full-flow performance.
- Self-priming to 25'.



Model	Disc.	HP	Voltage	Item #	List
RLHE-300	2"	3	115/230	RL-614481	

Discharge Pressure (PSI)							MAX PSI	Max Flow GPM
10	20	30	40	45	50	55		
Gallons Per Minute								
124	110	95	77	67	54	36	59	124

CAST IRON SPRINKLER PUMP

Ideal for both residential and commercial lawn sprinkling systems.

- Rugged cast iron casing and pump base for durability and long life.
- Self-priming to 25'.
- Repair kits available for easy replacement.
- Brass impeller conversion kits available for easy upgrade.



Model	Disc.	HP	Voltage	Item #	List
SPRK100	1.5"	1	115/230	RL-97101001	
SPRK200	1.5"	2	230	RL-97102001	

Model	Discharge Pressure (PSI) @ 5' Lift				MAX PSI	Max Flow GPM
	10	20	30	40		
	Gallons Per Minute					
SPRK100	63	54	38	11	45	63
SPRK200	76	75	65	47	49	76

PREMIUM CAST IRON

Ideal for high volume sewage, effluent, and general wastewater applications in places like parking lots, leaching fields, and laundry facilities.

- PSC dual bearing motor with overload protection.
- Capable of passing up to 2" diameter semi-solids.
- Piggyback switch included.
- 20' Power Cord



Model	Solids	HP	Voltage	Item #	List
RL52WA	2"	1/2	115	RL-14942663	
RL75WA	2"	3/4	115	RL-14942664	

	Flow in US GPM @ Total Head in Feet					SO	FLA
	5'	10'	15'	20'	25'		
RL52WA	100	80	53	20	-	22'	9.3
RL75WA	130	110	90	70	40	28'	11.0

CAST IRON SURFACE EFFLUENT

Ideal for pumping liquid from septic tanks, as well as pumping out flooded basements, irrigation, and general dewatering.

- Self-priming effluent pump with built-in check valve..
- Rugged cast iron casing.
- Cast iron impeller.



Model	Discharge	HP	Voltage	Item #	List
RL-S50	1-1/4" FNPT	1/2	115/230	RL-621810	

	Flow in US GPM @ Total Head in Feet				SO	Max PSI
	20'	30'	40'	50'		
RL-S50	100	80	53	20	49'	21



2" THERMOPLASTIC CHEMICAL TRANSFER PUMP

Ideal for sprayer applications such as liquid fertilizers and AG chemicals.

- Lightweight corrosion resistant construction.
- Self-priming to 25 feet of suction lift.
- Integrated check valve and carry handle.
- Rubber feet to dampen vibration.
- 3.8 qt. fuel tank.
- Carbon ceramic with EPDM elastomer seal.



Max Flow (GPM)	Max Height (ft)	Suction/ Disc. (in)	Fuel Tank (qt)	Engine OHV	Item #	List
195	140	2" FIPT	3.8	4 Stroke (212cc)	RL-617070	

2" ALUMINUM SEMI TRASH PUMP

Ideal for high volume transfer and dewatering. Can handle liquid slurries including sand, pebbles, and suspended solids less than 1/2" in diameter.

- Built-in check valve.
- Self-priming to 25' of suction lift.
- Durable cast iron semi-open style impeller.
- Lightweight aluminum outer casing w/ heavy-duty roll frame.
- Wear resistant silicon carbide mechanical seal.



Max Flow (GPM)	Max Height (ft)	Suction/ Disc. (in)	Fuel Tank (qt)	Engine OHV	Item #	List
150	92	2" MIPT	3.8	4 Stroke (208cc)	RL-617034	

ALUMINUM WATER TRANSFER PUMP

Ideal for general purpose use where portability is required such as liquid transfer and contractor de-watering applications.

- Durable cast iron semi-open style impeller.
- Lightweight aluminum construction with base and handle for portability.
- Self-priming to 25' of suction lift.
- Built-in check valve.
- EPA certified.
- Includes 1" adapter.



cc	Suction/ Disc.	Suction Lift	Max Head	Max Flow	Item #	List
79	1.5" MNPT	25'	25'	60 gpm	RL-617031	

6RLAG-3LTT ALUMINUM TRASH PUMP

Ideal for high volume water transfer and construction grade dewatering applications. Can handle liquid slurries containing sand, small rocks, and other debris less than 1-1/4" in diameter.

- Powered by 208cc 4 stroke air cooled OHV engine.
- Removable aluminum outer casing with cast iron inner volute and impeller for durability.
- Silicon carbide seal for abrasion resistance and trash application.
- Handles up to 1-1/4" solids.
- Includes heavy-duty roll frame.
- EPA certified.



Max Flow (GPM)	Max Height (ft)	Suction/ Disc. (in)	Fuel Tank (qt)	Item #	List
285	75'	3" NPT	3.8	RL-617038	

WATER DISCHARGE HOSE

Layflat hose is a lightweight, mildew and rot resistant water discharge hose. It can be used in irrigation, construction, flood protection, and other standard pump applications.

- Temp Range: -150C to +550C



	Max PSI	Full Roll	Item #	List
1 1/2"	70	300	TUB-LF15	
2"	65	300	TUB-LF2	

CLEAR/GREEN SUCTION HOSE

Tube Max. Full Roll Item # List

Tube I.D.	Max. PSI	Full Roll	Item #	List
1 1/2"	100		TUB-SHG15	
2"	100		TUB-SHG2	
3"	100		TUB-SHG3	



PLATED STEEL BASKET STRAINER

This is a standard, economical round hole strainer that is commonly used with water pumps in the construction industry.

FIPT	Item #	List
1 1/2"	PA-MSF15	
2"	PA-MSF2	
3"	PA-MSF3	



KAMLOCKS



Description	Aluminum		Plastic	
	Item #	List	Item #	List
1 1/2 FIPT x M	KAM-A150A		KAM-PL150A	
1 1/2 MIPT x F	KAM-A150B		KAM-PL150B	
1 1/2 INSERT x F	KAM-A150C		KAM-PL150C	
1 1/2 FIPT x F	KAM-A150D		KAM-PL150D	
1 1/2 INSERT x M	KAM-A150E		KAM-PL150E	
1 1/2 MIPT x M	KAM-A150F		KAM-PL150F	
CAP 1 1/2	NA		KAM-PL150DC	
PLUG 1 1/2	NA		KAM-PL150DP	
2 FIPT x M	KAM-A200A		KAM-PL200A	
2 MIPT x F	KAM-A200B		KAM-PL200B	
2 INSERT x F	KAM-A200C		KAM-PL200C	
2 FIPT x F	KAM-A200D		KAM-PL200D	
CAP 2	KAM-A200DC		KAM-PL200DC	
2 PLUG	KAM-A200DP		KAM-PL200DP	
2 INSERT x M	KAM-A200E		KAM-PL200E	
2 MIPT x M	KAM-A200F		KAM-PL200F	

Other sizes available on Page 88

DATA LOGGING PANELS



The EZ Series In-Site CL control panel is designed to control one or two 120/208-240V single phase pump(s) in water and sewage installations. It is designed to quickly connect to a laptop computer* and then download system information for monitoring and reporting. The EZ Series® In-Site® CL control panel utilizes the floatless C-Level sensor and is available for single phase simplex or duplex; demand and timed dose applications (can be easily converted in the field).

	Item #	List
Simplex Panel w/40' Sensor	SJE-CEZI	
Duplex Panel w/40' Sensor	SJE-CEZIDUPLEX	
Both panels have Nema 4 enclosures.		

Please Note: Any Commercial/Industrial Application requires an Intrinsically Safe Panel.

EZ SIMPLEX & DUPLEX SERIES PANELS

The EZ Series Single Phase Simplex panel is designed to control one 120/208/240V single phase pump in water or sewage installations. This control panel is easily converted to demand or



timed dose in the field. The EZ Series Single Phase Duplex Panel is designed to control two 120/208/240V single phase pumps in water or sewage installations. The alternating action equalizes pump wear. This system also provides override control should either pump fail.

- NEMA 4X enclosure w/red alarm light & audible horn and locking latch for added safety.
- Circuit breaker: one for pump disconnect and one for control and alarm disconnect.
- Terminal strip for easy wiring.
- External test-normal/silence alarm switch.

Cycle counter & run time meter. Required float switches are extra (3 SJE Pump Down Panel Switch).

Simplex Convertible - Time & Demand Dosing

	FLA	Item #	List
Simplex	15	SJE-CEZS2	
Duplex	15	SJE-CEZS4	

INSTALLER FRIENDLY SERIES IFS

Single phase, demand dose or timed dose, float or C-Level controller system for pump control and system monitoring.

The IFS control panel is designed to control one 115, 208, 230 VAC single phase pump in water and sewage installations. The panel features an easy-to-use touch pad with display on the inner door for programming and system monitoring. The panel configuration can be easily converted in the field to either a timed dose or demand dose.



c/w C-Level Sensor - 40 feet

Model	Item #	List
Simplex 115/230 V	SJE-CIFS2CLEVEL	
Duplex 115/230 V	SJE-CIFS4	
Panels have a Nema 4 enclosure.		

NEX SERIES SINGLE PHASE SIMPLEX CONTROL PANEL

Designed to control one single phase pump in water and wastewater applications. Two control switches activate a power relay to turn the pump on and off. If an alarm condition occurs, an additional alarm switch activates the audible/visual alarm system. The compact design (8 x 6 x 4") is ideal for residential applications. Universal pump voltage and control-alarm power allow the NEX Series™ panel to handle three voltages (120/208/240V). The innovative internal design of components and integral mounting tabs make installation quick and simple.



Amps	Item #	List
9-20	SJE-CNEX	

SJE PS PATROL SYSTEM (OUTDOOR)

Provides a convenient location to connect all wiring required for a pumping station application. It employs a receptacle to accept a 120V pump and piggy-back pump switch.

- Built-in high water alarm.
- Automatic alarm reset.
- Elapsed time meter.
- Red alarm LEDs illuminate cover for 360° visual in alarm condition.
- Auxiliary alarm contacts included for easy attachment of remote devices.



	Item #	List
32" Post Height	SJE-CPSP2	

PUMP UP (SINGLE FLOAT) (N/C)

Max				
Cord	HP	Amps	No Plug	Item # List
N/M	20'	13	1002737	SJE-20PMUWOP
115 V Plug				
N/M	20'	1/2	13	1002733 SJE-20PMU1WP
230 V Plug				
N/M	20'	1	13	1002735 SJE-20PMU2WP



PUMP DOWN (N/O)

- Passed NSF Standard 61 protocol by an approved Water Quality Association laboratory.
- Heavy-duty contacts.
- Controls pumps up to 3/4 HP at 120 VAC and 2 HP at 230 VAC.
- Adjustable pumping range of 7 to 36 inches (18 to 91 cm).
- UL Recognized for use in water and sewage.
- CSA Certified.



PMDWOP = 1/2 HP 115v or 1 HP 230v - 13 amp max.

PMPDWOP = 3/4 HP 115v or 2 HP 230v - 15 amp max.

Max				
Cord	HP	Amps	No Plug	Item # List
N/M	10'	13	1002712	SJE-10PMDWOP
N/M	20'	13	1002731	SJE-20PMDWOP
115 V Plug (Single Float)				
N/M	10'	1/2	13	1002630 SJE-10PMD1WP
N/M	20'	1/2	13	1002727 SJE-20PMD1WP
N/M	20'	3/4	15	1003255 SJE-20PMPD1WP
230 V Plug (Single Float)				
N/M	20'	1	13	1002729 SJE-20PMD2WP
N/M	20'	2	15	1003257 SJE-20PMPD2WP
115V (1.5HP) - 230V (3HP) Ampmaster Pump Switch				
N/M	20'		20	1006312 SJE-20AMDWOP

SGM SIGNAL MASTER FLOAT FOR PANELS (N/O) NSF 61, CSA

Pump Down			
Cord	Model	Item #	List
N/M	20'	1006052	SJE-20SGMPCNO
N/M	30'	1006045	SJE-30SGMPCNO
Pump Up/Down (N/C, N/O)			
N/M	20'	1006096	SJE-20SGMSPDTPC



VERTICAL MASTER (N/O)

115 V Plug (Pump Down)				
Cord	HP	Model	Item #	List
N/M	10'	1/2	10VM1WP	SJE-1003590
N/M	20'	1/2	20VM1WP	SJE-1003770



SIM-TECH PVC FLOAT TREE

Wire Organizer Hook: For easier removal of the float tree, install the J-Hook to organize all those excess wires in your pump chamber. This organizer hook becomes very handy in multiple situations if you're looking to organize cables, ropes, wires, etc.

Float Tree Bracket: The float tree bracket is used to mount the float tree (length of schedule 40 PVC pipe) directly to the pump chamber riser.

Float Holder Piggy Back: The float holder piggy back functions the same as the float holder hard wire, but can be used in situations when the float wiring can't be threaded through holes.



Bracket



Holder



	Item #	List
Float Tree	SIM-STFFTB	
Float Holder	SIM-STFFHPB	

PUMPMASTER WPS POTABLE WATER (CSA CERTIFIED) (N/O, N/C)

For tanks 250 US gallons or Larger
1/2 HP 115v or 1 HP 230v - 13 amp max.

Cord	Max Amps		Item #	List
15'	13	1047427	SJE-15PMWPSWE	



N/M - Non Mercury Switches
N/C - Normally Closed

N/O - Normally Open
HOA - Hand/Off/Auto

ACCESSORIES

	Item #	List
Cords 1/2" - Strain Relief	PA-STR	
Cord Seal for 1 Power Cord	UNS-CS1	
Cord Seal for 3 Power Cords	UNS-CS3	

	Item #	List
4 Float SS Switch Bracket	SJE-1009433	
Float Clip (Fits Bracket)	SJE-P1038824	
Cable Weight	SJE-1002230	
Clamp Assembly	SJE-1008569	



XPERT ALERT WIFI INDOOR ALARM SYSTEM

24-7 Remote Notification.

Helps protect your home from potentially costly damage due to flooding, pump failure or freezing pipes. The system monitors and reports any residential alarm condition by notifying you locally and remotely via text and/or email over WiFi or ethernet to your smartphone, tablet or computer. The sleek design of the enclosure makes this attractive alarm ideal for residential applications. The alarm works with an existing network, and since it does not rely on a cellular connection, it is an excellent solution for areas with poor cellular service. No monthly fees or contracts, and easy installation and setup make this a great option for businesses, rental properties and seasonal homes.



Item #

List

SJE-1061894

XPERT ALERT WATER SENSOR & ADAPTER

Helps protect your home from potentially costly damage due to flooding, pump failure or freezing pipes. The system monitors and reports any residential



Item #

List

SJE-1070659

SJE EZ TANK ALERT W/ TERMINAL BLOCK

The Tank Alert® EZ alarm is all about making installations easier! This indoor/outdoor alarm offers significant improvements over other alarms currently available for lift pump chambers, sump pump basins, holding tanks, sewage, agricultural and other waste applications.



Item #

List

(120v in/out + Terminal Block) [SJE-1036594](#)

Add Appropriate Float Switch, Pump Up or Pump Down

High Level Alarm Switches **Low Level Alarm Switches**
use PMD or SGM series Use PMU Series

SJE TANK ALERT XT HIGH/LOW WATER ALARM OUTDOOR

The Tank Alert® XT can serve as a high or low level alarm depending on the float switch model used. The alarm horn sounds and the red beacon illuminates when a potentially threatening liquid level condition occurs. A "power on" light on the switch indicates power to the alarm panel.



Item #

List

(120v in/out + Terminal Block) [SJE-1005836](#)

Add Appropriate Float Switch, Pump Up or Pump Down

High Level Alarm Switches **Low Level Alarm Switches**
use PMD or SGM series Use PMU Series

TANK ALERT SOLAR ALARM

The Tank Alert® Solar indoor/outdoor alarm can serve as a high or low level alarm depending on the float switch model used.



- Enclosure meets NEMA 4X standard.
- Automatic alarm reset, test/silence push button switch.
- Amber battery charging LED indicator.
- Green power on LED indicator.
- Alarm is powered by rechargeable battery via 12VDC, 10 watt solar panel (includes mounting bracket and 10 feet (3 meters) of 18/2 cable).
- Alarm will operate for up to 72 hours with no sun if not in alarm.
- Alarm will operate for up to 24 hours with no sun if in alarm.

Item #

List

SJE-1052475

ULTRA NATOR CONTROL AND ALARM SYSTEM

The Ultra Nator control and alarm system is designed to control two 120V, 1/3 to 1 HP pumps. The Ultra Nator system features two receptacles for easy pump connections. **No wiring!** The pumps will alternate. The Ultra Nator will only run one pump at a time.



- NEMA indoor use, 10 ft. power cord, 15A max.
- Green pump run indicators (pump 1, 2).
- Audible and red indicator visual alarm.
- Normal/silence alarm switch mounted externally.
- c/w 2-10' SJE MicroMaster Switches.

Item #

List

[SJE-1029624](#)

SJE TANK ALERT AB HIGH/LOW WATER ALARM INDOOR

The Tank Alert® AB alarm system can serve as a high or low level alarm depending on the float switch model used. The alarm horn sounds when a potentially threatening liquid level condition occurs. The horn can be turned off, but the alarm light remains on until the condition is remedied. Once the condition is cleared, the alarm will automatically reset.



Item #

List

120v in 12v out (Battery Backup Feature) [SJE-1011423](#)

Add Appropriate Float Switch, Pump Up or Pump Down

High Level Alarm Switches **Low Level Alarm Switches**
use PMD or SGM series Use PMU Series

2 CHAMBER POLYETHYLENE SEPTIC TANK

The unique Triangular Ribs are unparalleled in ability to resist vertical and horizontal ground pressure. The series of short, flat, triangular surfaces keeps the direction of the forces in line with each rib, thus substantially increasing stiffness compared with curved ribbed tanks. In curved ribbed tanks, approximately 50% of the curved wall surface area is capable of resisting vertical loads, whereas 100% of the wall surface area of Triangular Ribs contributes to the load bearing capacity of the tank.



Gal Size H x L x W Item # List

1000	56" x 100" x 83"	CYS-ST900D	
1300	64" x 100" x 83"	CYS-ST1125D	



FAT ALBERT PUMP OUT TANK

Spherical 'ball' style below ground tanks (max. backfill cover depth – 2'). Single 19" dia. manhole with provision to install 24" dia. riser section to ground surface.



Gal	Size D x W	Item #	List
500	66" x 66"	CYS-PO500	



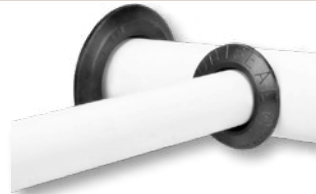
LOW PROFILE INGROUND GROUND TANKS

• Colour Green. • 24" lid. • 2" bottom outlet. • CSA certified for drinking water.

Volume		Height		Width		Length		Item #	List
IMP Gal.	US Gal.	Liters	Inches	Meters	Inches	Meters	Inches		
1,000	1,200	4,546	53"	1.35	50"	1.27	132"	3.35	CYS-RKC1000LP
1,550	1,860	7,046	56"	1.42	68"	1.73	154"	3.91	CYS-RKC1550LP

UNISEAL

Uniseal is designed for pipe penetrations into tanks. Simple to install as they do not require any access to the inside of the tank.



Uniseal is designed to fit PVC & Steel pipe from 3/8" to 6", providing a liquid tight connection.

Pipe Size	Hole Saw Size	Item #	List
3/8"	1"	UNS-038	
1/2"	1 1/4"	UNS-050	
3/4"	1 1/4"	UNS-075	
1"	1 3/4"	UNS-100	
1 1/4"	2"	UNS-125	
1 1/2"	2 1/2"	UNS-150	
2"	3"	UNS-200	
3"	4"	UNS-300	
4"	5"	UNS-400	
6"	7"	UNS-600	
SDR35 Pipe	4"	5"	UNS-35400
SDR35 Pipe	6"	7"	UNS-35600
Cord Seal for 1 Power Cords		UNS-CS1	
Cord Seal for 3 Power Cords		UNS-CS3	

ENVIRO ETA SERIES AIR PUMP

- Enviro air pump with built in alarm which detects low pressure in the airline.
- Integral high sounding buzzer and bright LED warning signals.
- Robust, compact construction is suitable for intermittent or continuous duty.
- Clean, oil-free air source.
- CE and UL approved for outdoor use.
- Equipped with thermal overload protection.
- Whisper quiet operation as low as 45dB.



	Air Flow LPM	Max. Diffuser		Item #	List
		Depth	Watts		
w/ Alarm	120	6.5'	90	BD-ET120A	
w/o Alarm	120	6.5"	90	BD-ET120	

9" MEMBRANE DIFFUSER

Each diffuser has a minimum of 6,600 engineered air release orifices, which is up to 20% more than others offer.

- Input: 3/4" MPT, 0.5-4 cfm airflow.

Size	Item #	List
9" Disc	FO-FLEX9	68.00



SIM-TECH TOP DISCHARGE SHIELD

Orifice shields are designed to protect the discharge holes in pressurized systems from the outside.



Item #	List
Orifice Shield SIM-STF106TDF	

24" MEMBRANE DIFFUSER

Tests have shown that EDI membrane diffusers deliver increases of 15 to 50% over competitive products.

- Input: 3/4" MPT. • 0-8 cfm airflow.

Size	Item #	List
24" x 2.44 Dia	FO-ED224	



HEAVY DUTY SEPTIC RISER 20" & 24" RISERS & COVERS

Tuf-Tite makes a full line of Risers and accessories for Pre-Cast applications.

- Riser Lid - with Molded-in gasket. Green Only.
- 6" Tall Riser - For septic tanks. Stackable in 6" increments.
- 12" Tall Riser - For septic tanks. Stackable in 12" increments.



	Item #	List
20" x 6"	TT-20X6RIS	
20" x 12"	TT-20X12RIS	
20" HD Flat Lid	TT-20HDCOVER	
24" x 6"	TT-24X6RIS	
24" x 12"	TT-24X12RIS	
24" HD Flat Lid	TT-24HDCOVER	
Adapts Polylok to Tuf-Tite		
Riser to Riser Adapter	TT-20RTR	
Riser to Riser Adapter	TT-24RTR	

24" RISER BASE FOR 24" COLUMN

Make your own lift station, contact chamber, or external filter basin.

	Item #	List
24" Base Sump Ring	TT-24RB	



24" STARTER RING

- For mounting riser or lid to tank when casting-in is not an option.

	Item #	List
Adapter Ring	TT-20AR	
Adapter Ring	TT-24AR	

20" X 24" RISER ACCESSORIES

	Item #	List
Butyl Sealant Rope	TT-516ROPE	
25 SS Screws	TT-SCREW25	
50 SS Screws	TT-SCREW50	

2HDS-4 2-HOLE SUMP BOX

This simple, reliable, easy-to-install drain sump is strong, non-corrosive, stable and permanent. Made of High Density Polyethylene and features Tuf-Tite's self-sealing Pipe Seals.

- Sump is 16" W x 16" L x 14 1/2" D.
- **Grate or Lid sold separately.**
- Includes: 1 ea S-35, S-40 seals & P-10 plug.

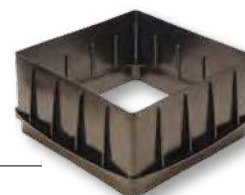


	Item #	List
2-Hole Drain Sump	TT-2HDS4	
Drain Grate Black 16" x 16" x 2"	TT-B4DG	
Solid Lid	TT-B4RL	

B4 SUMP BOX RISER

Fits the 2HDS-4 sump box. Stackable HDPE risers extend to grade in 6" increments.

	Item #	List
	TT-B4RISER	



TUF-TITE EF-6 EFFLUENT FILTERS

The EF-6 series filters remove solids down to 1/16" and greatly extend the life of the septic system. Shown at the right is the EF-6 combo which includes the standard length (14" rise) sanitary t-baffle, the EF-6 filter, and the B4035 bushing for reducing the outlet from Sch. 40 to SDR35 pipe.

The solids deflector is molded in.

- EF-6: 244' of 1/16" filtration area.

	Item #	List
1,500 GPD	TT-EF6	



PIPE SUMP SEALS

S-35: Yellow pipe seal for thin wall pipes (sewer and drainage).

S-40: Blue pipe seal for Schedule 40 pipes.

P-10: Orange plug for unused D-Box holes.

	Item #	List
Yellow Pipe Seal	TT-S35	
Blue Pipe Seal	TT-S40	
Orange Plug	TT-P10	



3-IN-1 QUIET CHECKMATE

Includes slow closing check valve, ball valve and union.

Size	Item #	List
1 1/2"	VA-CMQ15	
2"	VA-CMQ2	



HI-COUNT LIQUID LIVE BACTERIA

PRO-PUMP/HC has exceptional oxidation capability. On-site wastewater septic systems rely on microorganisms in the tank and soil to breakdown and remove organic waste and complete the water purification process. This biological process is performed primarily by facultative anaerobic and anaerobic bacteria. Maintenance of these select microbes is critical to long-term system performance. PRO-PUMP/HC is designed to meet these needs, containing microbes that exhibit a high level of facultative anaerobic and anaerobic activity assuring continued system performance. PRO-PUMP/HC has a production process that mirrors the environmental conditions which exist in on-site wastewater biological processes - THAT'S WHY IT WORKS SO WELL.



	Item #	List
Gallon	MLP-HCG	

SEPTIC SAVER KIT

PRO-PUMP/SEPTIC SAVER is a special combination pack of environmentally safe biological products in liquid (quart bottle of our PRO-PUMP/HC) and ready to use packets (PRO-PUMP/SP). These two bio-formulations will reduce odor, and break down solids in lines and tanks. PRO-PUMP will assist the naturally occurring bacteria in your on-site wastewater system to break down and degrade waste products like tissue, grease, fats and oils that cause problems in your drain field.



	Item #	List
Kit	MLP-SSKIT	

SEPTIC DIGESTANT

A highly active, liquid microbial consortium designed specifically for on-site septic systems. PRO-PUMP/SD offers a pleasant fragrance for in-home applications and features several strains of select spore-forming microorganisms. PRO-PUMP/SD promotes optimum biological system performance in tanks and drain fields and is effective in cleaning and deodorizing drain lines, kitchen drains and bathroom stools. It's the all in one product and application.



	Item #	List
	MLP-SDG	

DRAINLINE & GREASE TRAP TREATMENT

PRO-PUMP/DGTT goes to work on contact to degrade difficult line and trap deposits and control odorous reactions.

- Pleasant fragrance.
- Eliminates odors.
- Cleans lines.
- Reduces grease trap pumping.
- Reduces interceptor cleaning.
- Benefits receiving wastewater systems.



	Item #	List
Gallon	MLP-DGTTG	

SEPTIC PACKETS

A highly active, non-odorous bio-formulation applied by the home owner, designed to supplement the service of professionals and their use of PRO-PUMP/HC following pumping. Pro Pump/SP assures continued year-round biological activity via monthly application and stability in systems receiving inhibitory shock loadings such as: sanitizers, medication and high tissue use.



Pro Pump/SP also improves performance in systems under stress due to large family occupancy. This DRY POWDER bio-formulation is highly active and packaged in 12 convenient two ounce water-soluble packets. Simply flush one packet down the septic tank each month to assure long term biological activity in the entire septic system.

- Maintains system biological activity.
- Helps break down tissue.
- Reduces surface and bottom solids.

	Item #	List
12 - 2 oz Pkg	MLP-SPPACK	

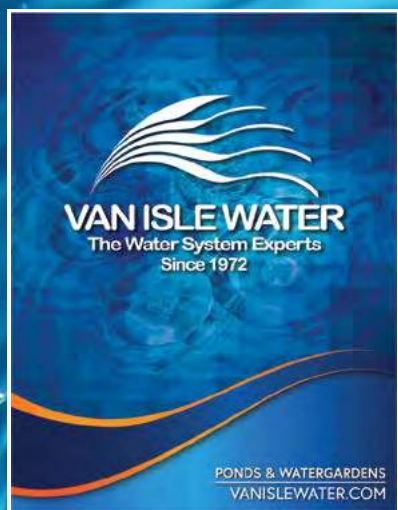
BIO-REMEDIATION SMALL HOME KIT

The Pro-Pump Bio-Remediation Kit incorporates microbial enhancement technology that increases the rate of breakdown of difficult and slow to degrade organic matter contained within the absorption system. It also incorporates natural, organic bio-stimulants and oxygen sources to accelerate biological activity, and promote faster removal of accumulated organic solids and bio-mats from absorption systems.

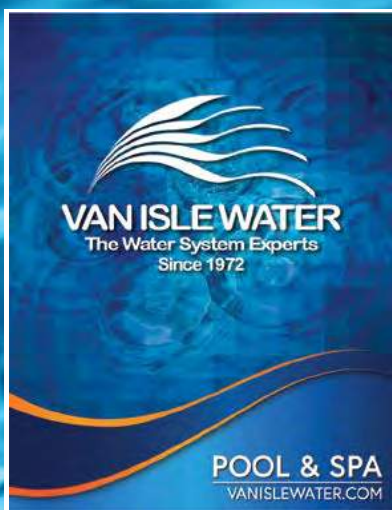


	Item #	List
Kit	MLP-HOMEKIT	

OUR FULL LINE OF CATALOGUES ARE AVAILABLE ON VANISLEWATER.COM



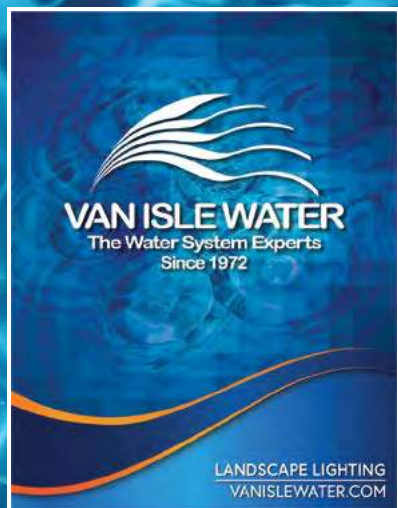
[Click to Download](#)



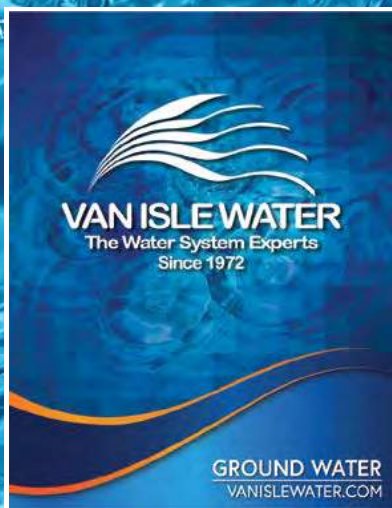
[Click to Download](#)



[Click to Download](#)



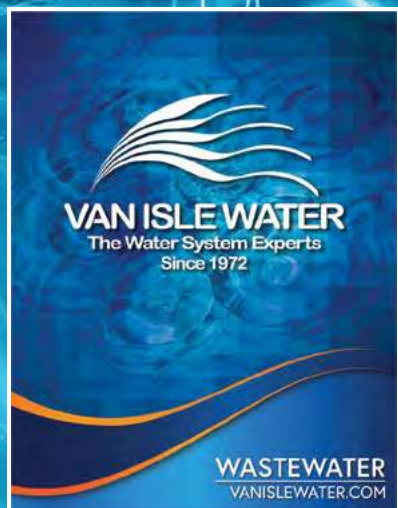
[Click to Download](#)



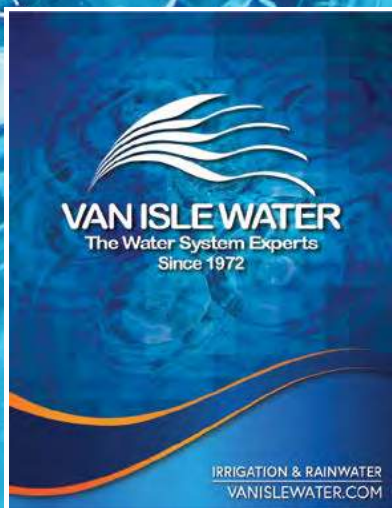
[Click to Download](#)



[Click to Download](#)



[Click to Download](#)



[Click to Download](#)



[Click to Download](#)



VAN ISLE WATER

The Water System Experts
Since 1972

...but wait, there's more!

Advantages of vanislewater.com:

- In-Depth Product Details and Specifications
- Download Your Receipts
- Print Your Invoices and Statements
- Look Up Full Transaction History
- Initiate Returns and Warranty Claims
- Pay Your Account Balance Online
- View All of Your Purchased Items
- Real Time Inventory Availability



461 Dupplin Rd, Victoria BC 1-888-444-8497 • 250-383-7145
260B Tsolum Rd, Courtenay BC 1-800-665-8311 • 250-338-8737
800-10281 Grace Rd, Surrey BC 1-888-444-8497 • 778-357-0257

OPEN
24 Hours
ONLINE