

# Get In-Site to Your On-Site Systems!



## EZ Series® In-Site® CL Data Logging Control Panel

Designed to Quickly Connect to Laptop Computer for System Programming, Monitoring & Reporting

Plug your laptop computer (software requires Windows® XP, Vista® or 7 operating system) into the **Modbus Port** located on the inside door to **quickly download system events** which have occurred, including pump run times, pump cycles, alarm conditions, HOA settings, power outages, service calls and more. Up to 4,000 system events are stored and when capacity is reached, oldest events are replaced by the newest events. The **software** (included with the panel) **formulates system data for you**, creating reports **quickly and easily** so system conditions can be identified and corrected. In addition, the **EZ Series® In-Site® CL** panel logs any changes made to the system settings, which helps protect service providers.

### Control Panel Programming Screen

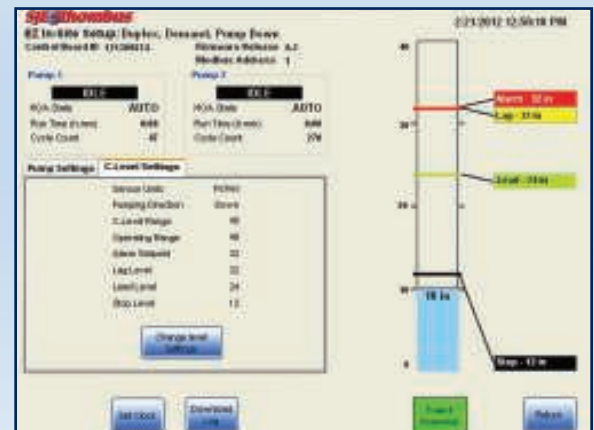
This screen allows the user to program pump settings, C-Level™ sensor settings and control panel parameters. It provides visual indication of the tank level and C-Level™ activation levels.

### Daily Events Screen

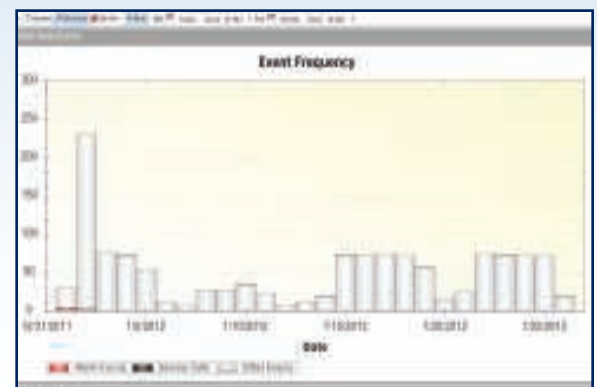
This screen summarizes **all events occurring daily**, including **alarms, service calls and other events**. This graphical display allows user quick access to what is happening in the system. Clicking on the colored event bar opens a daily data report for each event.

### Daily Flow Screen

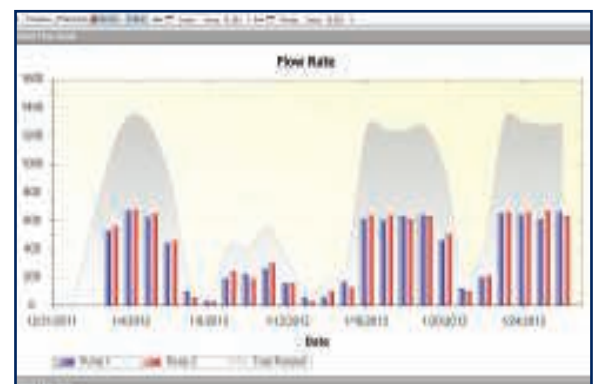
This screen summarizes the **number of gallons flowing through the system** on a daily basis: pump 1 gallons (simplex), pump 2 gallons (duplex), and total gallons. This report is useful for diagnosing system trends.



Control Panel Programming Screen



Daily Events Screen



Daily Flow Screen

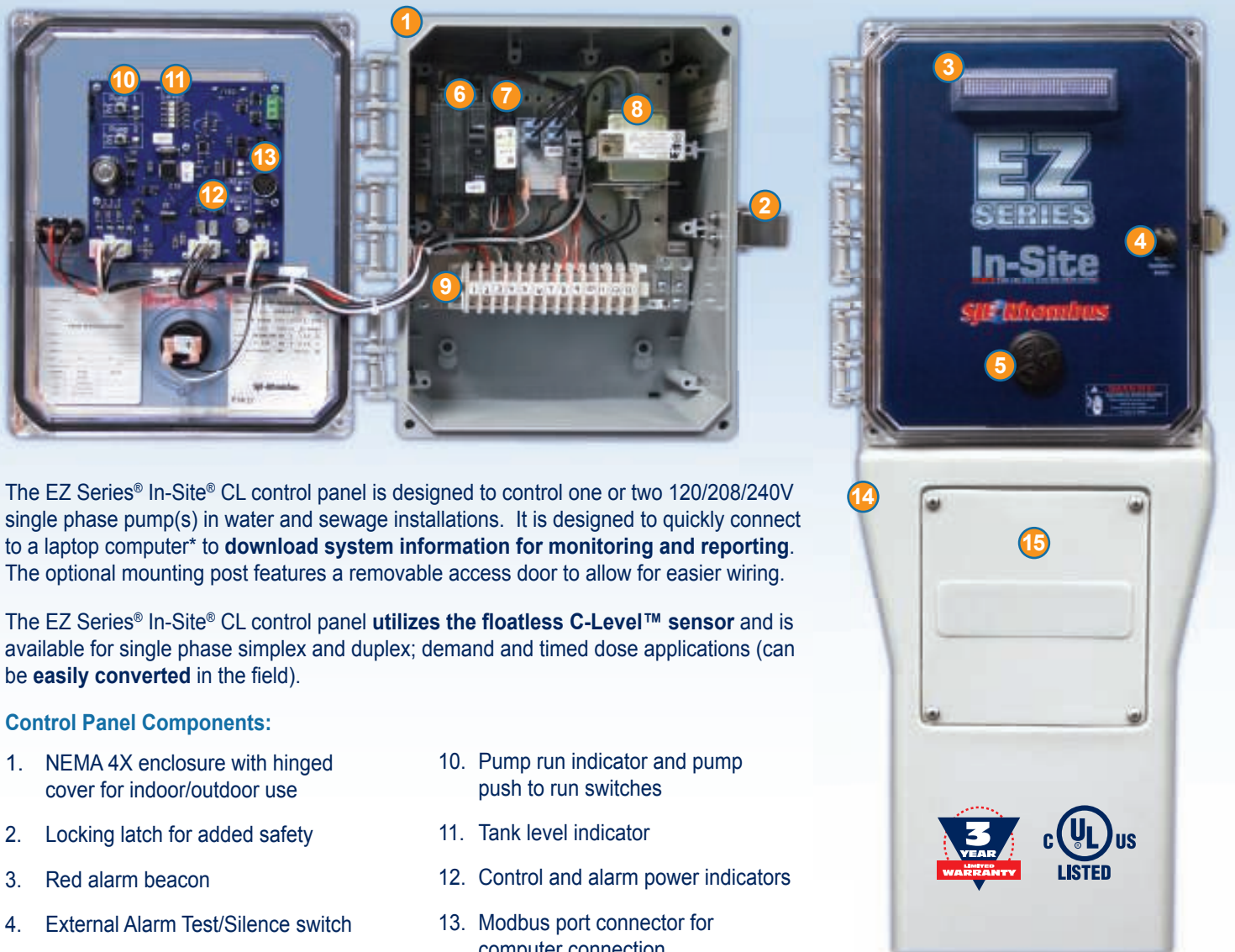
**SJE**  
**Rhombus**

1-888-DIAL-SJE (342-5753)  
[www.sjrhombus.com](http://www.sjrhombus.com)



# EZ Series® In-Site® CL

Data Logging Control Panel Designed to Quickly Connect to Laptop Computer for System Programming, Monitoring & Reporting



The EZ Series® In-Site® CL control panel is designed to control one or two 120/208/240V single phase pump(s) in water and sewage installations. It is designed to quickly connect to a laptop computer\* to **download system information for monitoring and reporting**. The optional mounting post features a removable access door to allow for easier wiring.

The EZ Series® In-Site® CL control panel **utilizes the floatless C-Level™ sensor** and is available for single phase simplex and duplex; demand and timed dose applications (can be **easily converted** in the field).

### Control Panel Components:

- |   |  |
|---|--|
| 1. NEMA 4X enclosure with hinged cover for indoor/outdoor use             | 10. Pump run indicator and pump push to run switches |
| 2. Locking latch for added safety   | 11. Tank level indicator                             |
| 3. Red alarm beacon   | 12. Control and alarm power indicators               |
| 4. External Alarm Test/Silence switch                                     | 13. Modbus port connector for computer connection    |
| 5. Audible alarm horn   |  |
| 6. Circuit breaker provides branch circuit protection and pump disconnect |  |
| 7. Auxiliary alarm relay  |  |
| 8. Transformer  |  |
| 9. Large terminal strip for easy wiring                                   |  |

### Optional Post Features:

- 14. Post can be mounted directly into ground, over a 4x4, or conduit for quick, clean, easy installation
- 15. Post features removable access door for easy wiring



1-888-DIAL-SJE (342-5753)  
[www.sjerrhombus.com](http://www.sjerrhombus.com)

\*Data connection cable required for installation and downloading data sold separately.