

WATER FEATURE EQUIPMENT CHECKLIST



Create Your Own Backyard Oasis!

And all the air is filled with pleasant noise of waters.
- William Wordsworth

If there is magic on this planet, it is contained in water.
- Loren Eiseley

The ability to divert, store and circulate water is the very foundation of civilization. Fountains and cisterns have always been central to our communities, not just as necessities. We seek out that 'pleasant noise', as soothing and mesmerizing to us now as it has been since the dawn of time. The sound of gentle splashing on stones, the reflection of ripples flickering in the sunlight, its liquid caress in a mossy basin — water attracts and captivates like no other element.

Picture a translucent sheet of water springing as if by magic from a stone wall in a quiet corner, the only sound the water trickling through polished pebbles. Nightfall brings enchantment, as the sheer falls light from within, casting a gentle curtain of shimmering illumination.

Or imagine, as you walk through the garden, approaching three slender vases, of three different heights, rising from the graveled path. Their tops overflow, liquid skirts sliding down their sides to vanish noiseless and splashless into the gravel at your feet.

Or, envision rough columns of dark volcanic stone erupting starkly from a raked stone bed. Water cascades from their polished, angled tops down rugged, cleft sides, to disappear into the pebbles with a sibilant hiss.

Whatever the vision in your mind's eye, this guide will help you to conjure the water feature of your dreams.

The magic of water is waiting for you!

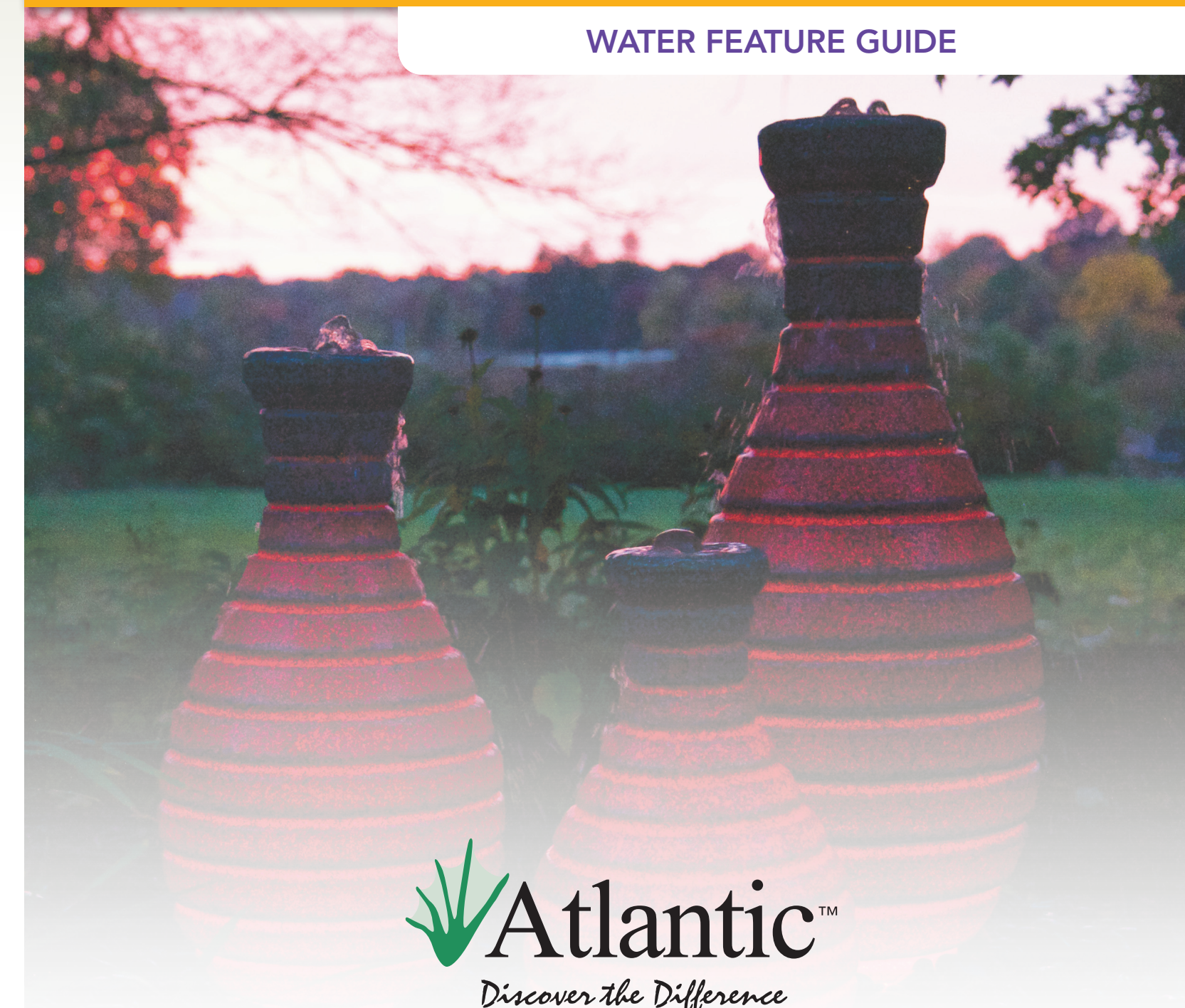
Let's Get Started!

Fountain Basins	Eco-Blox & Eco-Rise System	Colorfalls
24" Oasis Fountain Basin _____	Oasis PV1700 Pump Vault _____	12"- 24"- 36" Original Colorfalls _____
32" Fountain Basin _____	Eco-Blox _____	6"- 12"- 24"- 36" Color Changing _____
46" Fountain Basin _____	Eco-Rise _____	12"- 24"- 36" SS Scupper _____
TidalWave Pump _____	TidalWave Pump _____	12"- 24"- 36" SS Splash Ring _____
¾" Kink-Free Hose _____	¾" Kink-Free Hose _____	12"- 24"- 36" Basin _____
1½" Flex PVC Pipe _____	1½" Flex PVC Pipe _____	TidalWave Pump _____
PVC Glue/Primer _____	PVC Glue/Primer _____	1½" Flex PVC Pipe _____
Auto Fill _____	Auto Fill _____	PVC Glue/Primer _____
Plumbing Kit Single _____	Plumbing Kit Single _____	Auto Fill _____
Plumbing Kit 3-Way _____	Plumbing Kit 3-Way _____	Cleaning Brush _____
Fountains	Accessories	Basin Kits
Pebble Pot Fountain _____	SOL Lights _____	12" Basin Kit _____
Basalt Column Fountain _____	Extra Plumbing Fittings _____	24" Basin Kit _____
Color Changing Fountain _____		36" Basin Kit _____
Accessories	Biocuda Water Treatments	Biocuda Water Treatments
SOL Lights _____	Colorfalls & Fountain Treatment _____	Colorfalls & Fountain Treatment _____
Extra Plumbing Fittings _____	Eco-Klean Oxy Pond Cleaner _____	Eco-Klean Oxy Pond Cleaner _____



Let's Talk Water Features

WATER FEATURE GUIDE





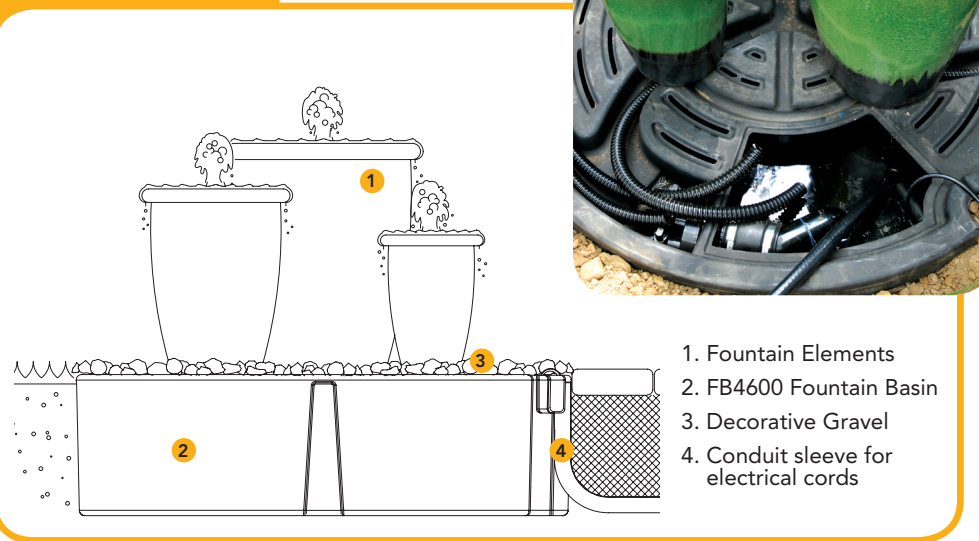
WHY WATER FEATURES?

Self-contained water features such as the ones pictured here exchange the open water of ponds and streams for completely enclosed reservoir systems, making them easy to construct and maintain. But their most beguiling attribute is their versatility, lending themselves gracefully to whatever tableau your imagination dictates. Completely self-contained Basin Kits and Fountain Basins, for up to three decorative elements, can be sited anywhere; through walls, above or below ground, on or in patios and walks or anywhere else, outside or inside the home. The Eco-Blox / Eco-Rise system, concealed in the ground, accommodates any size and any number of decorative elements, making it the most versatile of all. These water features provide all the visual interest without all the care and upkeep of ponds, no open water to collect debris or worry about, and they can be turned on and off at will. No wonder they've become so popular!

FOUNTAIN BASINS

When it comes to creating disappearing fountains, no other system is as quick and easy. Three different sizes, the largest designed to handle up to three different elements, ensure the proper basin for your needs. Accessories like Automatic Fill valves and 3-Way Diverters make installation and upkeep a snap. Completely self-contained Fountain Basins can be installed above or below ground, in patios or planting beds, so they adapt to any location, inside or out. Kits come complete – just add your own special decorative element!

How It Works:



DECORATIVE ELEMENTS

For the most convenient possible water feature, combine any one of the three sizes of Fountain Basins with one, two or three ready-to-run basin toppers. Choose between scintillating Color Changing Vases that light up the night, elegant hand-painted Pebble Pots for a more formal look or faux Basalt Columns to bring the rugged natural look of stone to your backyard oasis. Atlantic's fountains are available in a variety of sizes or as part of complete kits.



FORMAL SPILLWAYS

THE COLORFALLS

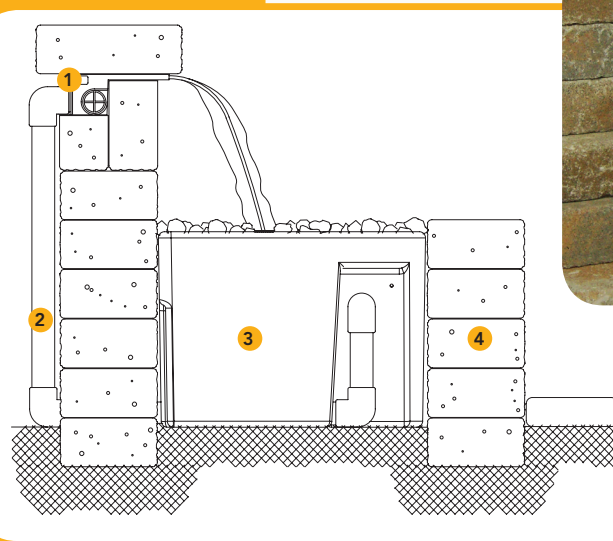
Few features have the impact of Atlantic Colorfalls. The first lighted weir designed specifically for water features, Colorfalls enchant with a sparkling sheer descent of water illuminated from within with glowing light. Three different sizes of original Colorfalls brighten the night in your choice one of four individual colors.

For an even more stunning display, our Color Changing Colorfalls will captivate you with 48 vibrant colors. Completely redesigned, the Color Changing Colorfalls are available in four different sizes, feature a radio frequency remote control and a fully modular construction, linking seamlessly to create sheers of any width!

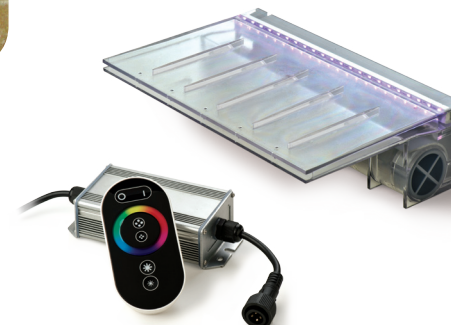
Add to that the versatility of multiple plumbing connection sites and a removable back plate that provides unparalleled access for routine maintenance and one-step winterizing, and you have the best-designed and best performing unit ever built! All Colorfalls are available as stand-alone units, or for the ultimate in installation convenience, with Kits including everything you need, from pump to plumbing – all you provide is the wall!



How It Works:

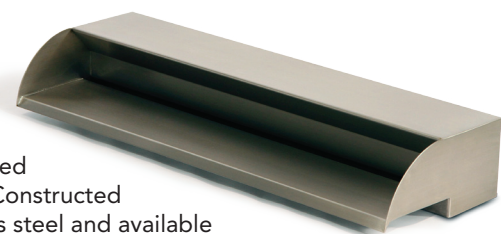


1. Colorfalls
2. 1½" supply line
3. Colorfalls Basin
4. Retaining Wall Stone



STAINLESS STEEL SCUPPERS

Where a touch of elegance is required, our Stainless Steel Scuppers and matching Splash Rings bring sleek, sophisticated style to your garden. Constructed of durable 304 stainless steel and available in the same sizes as the Colorfalls, the open, non-clogging design makes these weirs excellent for ponds and pools as well.



Our Stainless Steel Splash Rings tame stray droplets with style! Use with mesh up or down for a gleaming, elegant border between falls and stone. For a really dramatic effect, use Splash Rings to focus and amplify both sound and light, adding even more flair to your feature!



THE ECO-BLOX & ECO-RISE SYSTEM

THE ECO-BLOX

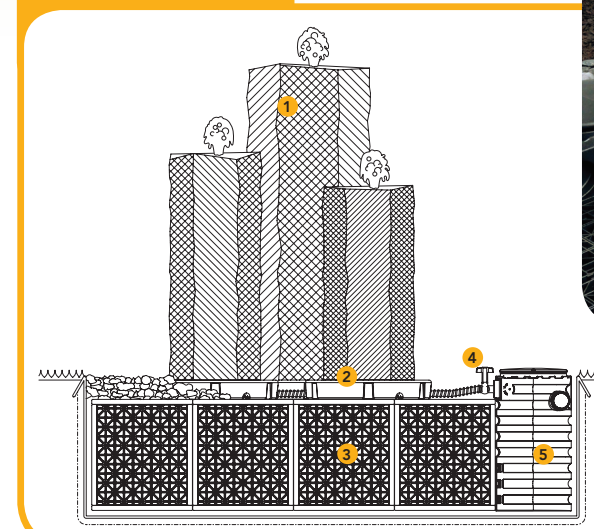
Each Eco-Blox holds 32 gallons of water, but that's only one-third the story. A reservoir filled with Eco-Blox holds three times as much water than one backfilled with gravel, so you can dig one-third the hole, move one-third the soil, and forget about the cost and effort of all that gravel!



THE ECO-RISE

For literally limitless fountain applications, Atlantic has developed the all new Eco-Rise, a deceptively simple device that allows you to place any number of water features right on any size, shape or capacity reservoir. This will save you the time and cost of multiple individual basins and free you from space constraints. When combined with the PV1700 Pump Vault, you can connect up to six different features to two pumps for the greatest possible versatility for those special projects. The Eco-Blox / Eco-Rise System can handle anything you want to throw at it, or on it – each Eco-Rise is rated for 3000 lbs., with access ports to make wiring and plumbing a breeze. Combine the Eco-Blox / Eco-Rise System with Rainwater Harvesting for even greater utility!

How It Works:



1. Rock Column
2. Eco-Rise
3. Eco-Blox Basin
4. Triton 3-Way Diverter
5. PV1700 Pump Vault

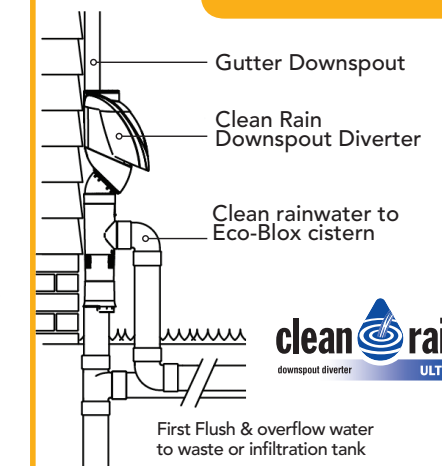
CONSIDER RAIN HARVESTING...

...when designing your feature. Rainwater, whether stored for re-use or to captured to recharge groundwater, is a precious resource. Creating a rainwater harvesting system could be as easy as adding an inexpensive downspout diverter to your Eco-Blox reservoir.



www.atlanticwatergardens.com

How It Works



Want to know more? Check out Atlantic Water Gardens' University page on our website. There, learn all about pumps, filtration, aeration and so much more! When you finish, take the quiz to earn your Atlantic Water Gardens Certificate of completion.

There are a lot of great things happening at Atlantic, so go ahead...

Discover the Difference!



Atlantic
Discover the Difference