

Non-Submersible Pumps

Jet Pumps - Shallow Well Cyclone Series

J-CLASS

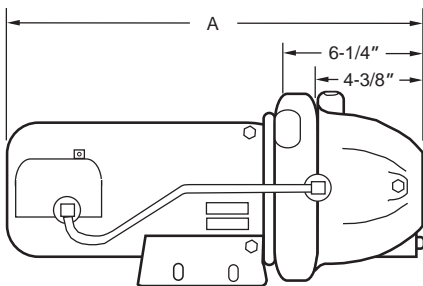
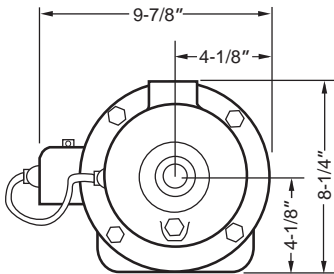
Cyclone Series



NRTL/C
CSA 108
UL 778

Features:

- Available in non-corrosive thermoplastic
- Replaceable in-line nozzle/venturi design for maximum hydraulic efficiency and ease of service
- Self cleaning, anti-clogging injector screen
- Thermoplastic impeller and diffuser ensure increased hydraulic performance
- Floating stainless steel eye seal for maximum performance and efficiency
- Square-flange mounting provides easy serviceability without disturbing the plumbing
- Built-in drain plug for easy winterizing and servicing
- Mechanical shaft seal allows positive protection against leaking
- Order pressure gauge separately
- Pressure switch is installed and set at 30/50 psi
- Handles water temperatures up to 120 °F/49 °C and working pressure up to 75 psi
- Connections:
1" NPT discharge
1-1/4" NPT suction



Dimensions:

MODEL NO.	HP	A
JCY05P	1/2	17-5/8"
JCY07P	3/4	18-1/4"

Note: Dimensions will vary according to motor manufac-

Non-Submersible Pumps

Jet Pumps - Shallow Well Cyclone Series

Ordering Information:

(See pgs. 2-3 for model number explanation)

PLASTIC PUMP BODY					
MODEL NO.	HP	DISCHARGE X SUCTION	VOLTAGE	PUMP UNIT	
				ORDER NO.	WT.
JCY05P	1/2	1" x 1-1/4"	115/230	91020050	23
JCY07P	3/4	1" x 1-1/4"	115/230	91020075	31

Note: All weights in pounds.

Performance Chart:

HP	TOTAL SUCTION LIFT FT	DISCHARGE PRESSURE - PSI								SHUT-OFF PRESSURE PSI
		30	35	40	45	50	55	60	65	
		GALLONS PER MINUTE								
1/2	5	12.0	10.7	9.1	7.2	4.9	2.8	0.9	-	62
	10	-	10.0	8.4	6.3	3.9	1.9	-	-	60
	15	-	-	7.7	5.3	3.0	0.9	-	-	57
	20	-	-	6.4	4.3	2.2	0.2	-	-	55
	25	-	-	5.0	3.3	1.4	-	-	-	53
3/4	5	-	16.0	14.4	12.6	10.6	8.3	5.0	1.8	68
	10	-	-	13.5	11.8	9.7	6.9	3.6	0.2	65
	15	-	-	-	11.0	8.8	5.4	2.2	-	63
	20	-	-	-	9.0	7.2	3.9	0.8	-	60
	25	-	-	-	-	5.6	2.3	-	-	58