



Liquid EPDM for Ponds and
Fountains Leaks and Repair



PMB 342 ■ 494 Bridgeport Ave. Suite 101 ■ Shelton, CT 06484-4748
Phone 1-610-298-1989 Fax 702-977-2936 info@pondpro2000.com Website <http://www.pondpro2000.com>

Manual Application Instructions for *PondPro 2000*

Surface preparation

Wash pond to get any build up dirt, mold or algae free from current liner. The current pond must be perfectly dry prior to application. Repair torn rubber with adhesive Butyl Tape.

A rubber patch may be applied over torn area if desired. Smooth metal or plastic surfaces should be roughed up to improve adhesion of PondPro 2000. A deglossing solvent may work on some plastics. Should you get an unexpected rain after applying Pond Pro you do not need to worry. The water will not damage the material in the uncured state. You will need to wait until the water has evaporated for the product to continue to cure. Please take those days into consideration into the overall cure time of 7 days. The same goes if your daytime temperatures fall below 55 degrees. This will not hurt the product but it will delay the cure time.

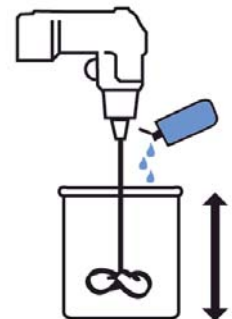


Coverage:

PondPro 2000 will cover up to 10 square feet per quart on a very smooth surface. The required 20 mil film thickness will be achieved when the above spreading rate is used. If you are uncertain how to calculate the amount of material you will need, please contact EPDM Coatings at (610-298-1949) M-F 9:00.am-5:30 EST.

Mixing Directions:

The container is under filled to allow for the addition of the pre-measured catalyst that is included. A drill, and a mixer (shown below) will be needed to incorporate the catalyst. For a quart can a short mixer will suffice.



Mix rubber material in can/pail until uniform; center mixer shaft in pail or can and begin mixing until a vortex is formed. Slowly pour all of catalyst into vortex. Move mixer up and down and in a circular motion for 2-3 minutes until all portions of can/pail are uniformly mixed

Application:

By brush or roller. A combination of methods might be most effective. Pour a serpentine bead of material,

distribute with the brush or roller on flat areas. The brush will also help to press air out of cracks and even out the wet film. Product will self level when sufficient material has been applied. Working time is 4-6 hours depending on temperature. A single application of PondPro 2000 is preferable to multiple coats. Touch-ups may be applied as desired after initial film has cured and surface is first wiped with solvent.

Temperature and Cure Conditions:

PondPro 2000 may be applied at any temperature that permits it being spread onto the surface. It will waterproof immediately upon application. The solvent will evaporate at a rate governed by temperature but will not be affected by relative humidity. Exposure to freezing temperatures before cure has taken place will not damage the film. The time necessary to reach cure should not be a concern as this process will occur automatically. Exposure to sunlight will accelerate the curing process. The final film properties of the cured membrane will be the same regardless of the time required to achieve cure. PondPro 2000 will provide long term protection even under extreme exposure conditions.