



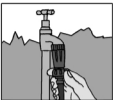
1. Plan your system. Where will you place the 1/2" poly tube to distribute the water? Where will you cut the tube? Where will you put the emitters? TIP: Before you start, uncoil the tube & lay it out in the sun to soften & make it easier to handle.



2. Lay out the 1/2" poly tube according to your plan. To change direction or add another route, cut the tube and use the elbows and tees.



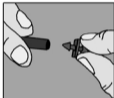
3. Attach the pressure regulator to the garden tap (or the tap timer if you have one fitted). Use the tap adaptor if the tap connection is too large. NOTE: If the water supply is non-potable, you may need filtration.



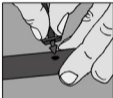
4. Screw the 1/2" nut & tail onto the pressure regulator & connect the 1/2" poly tube onto the tail, securing it with the ratchet clamp. TIP: It is easier to push the tube onto fittings if you CAREFULLY dip the end of the tube into a container of hot water for a few seconds.



5. Using the Key Punch supplied, make a hole in the 1/2" poly tube where you want an emitter to be placed.



6. Push the soft 1/4" uPVC tube onto one side of the 1/4" Barb x Barb Hypodermic Joiner.



7. Push other end of the adaptor into the hole in the 1/2" poly tube.



8. Cut the 1/4" tube to a suitable length and push the free end of the uPVC tube onto the beveled side of the Asta PC Drip Spike.



9. Push the Asta PC Drip Spike into the soil near the plant so that the water will wet the rootzone effectively. Install further Asta PC Drip Spikes until you have completed the installation according to your plan.



10. If you change your mind about the location of an emitter after punching the hole, insert a Goof Plug to block the opening.



11. Now secure the 1/2" poly tube by pushing Hold Down Stakes into the soil at regular intervals along the tube.



12. Before you install the End Plugs to seal the ends of the 1/2" poly tube, turn on the tap & flush out any pieces of plastic or soil. Turn off the tap and insert the End Plugs.



13. You have now successfully installed your Asta PC Drip Spike system.

INSTRUCTIONS FOR INSTALLING ASTA® PC DRIP SPIKES



ANTELCO
Putting water where it counts!®